

# Nuove configurazioni di **pareti antincendio** a **Grande Altezza**



**GYPSOTECH®**

**FASSA  
BORTOLO**

# NUOVE CONFIGURAZIONI DI PARETI ANTINCENDIO A GRANDE ALTEZZA

Nelle tabelle successive sono riportate le nuove configurazioni di pareti con altezza superiore ai 4 m in ottemperanza alle disposizioni dettate dalla norma di estensione (EXAP) EN 15254-3.

Tali configurazioni vanno a sostituire integralmente le estensioni permesse dai

precedenti Fascicoli Tecnici FT.02 e FT.03 i quali non sono più validi.

Per ulteriori approfondimenti contattare [area.technica@fassabortolo.com](mailto:area.technica@fassabortolo.com)

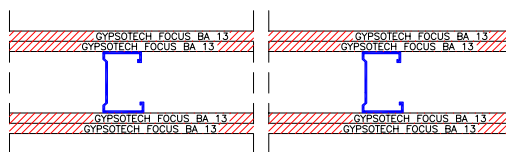
## H max 5 m

Le configurazioni riportate si riferiscono esclusivamente al caso d'incendio, e non sostituiscono le valutazioni strutturali in caso di esercizio normale che andranno eseguite secondo le disposizioni normative cogenti.

### EI 45 - EI 60 - EI 90 - EI 120

**WF 75/125**

minimo  
C 75

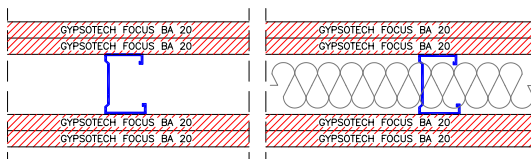


FOCUS BA 13  
FOCUS BA 13  
—  
FOCUS BA 13  
FOCUS BA 13

### EI 180

**WF 75/155**

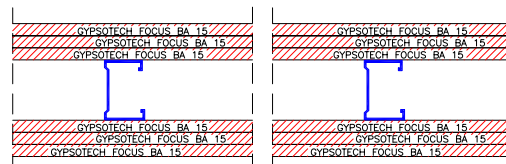
minimo  
C 75



FOCUS BA 20  
FOCUS BA 20  
—  
ISOLANTE (opzionale)  
—  
FOCUS BA 20  
FOCUS BA 20

**WF 75/165**

minimo  
C 75



FOCUS BA 15  
FOCUS BA 15  
FOCUS BA 15  
—  
FOCUS BA 15  
FOCUS BA 15  
FOCUS BA 15

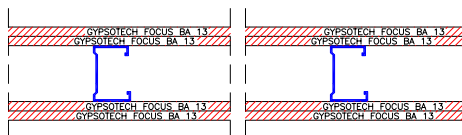
# H max 6 m

Le configurazioni riportate si riferiscono esclusivamente al caso d'incendio, e non sostituiscono le valutazioni strutturali in caso di esercizio normale che andranno eseguite secondo le disposizioni normative cogenti.

## EI 45

**WF 75/125**

minimo  
C 75

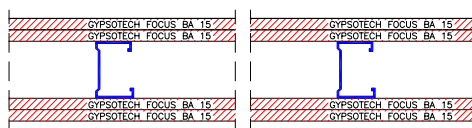


FOCUS BA 13  
FOCUS BA 13  
—  
FOCUS BA 13  
FOCUS BA 13

## EI 60

**WF 75/135**

minimo  
C 75

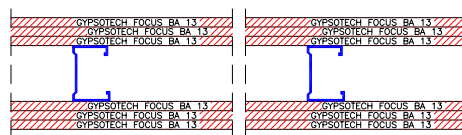


FOCUS BA 15  
FOCUS BA 15  
—  
FOCUS BA 15  
FOCUS BA 15

## EI 120

**WF 75/150**

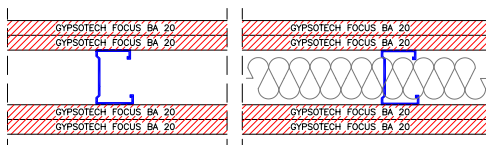
minimo  
C 75



FOCUS BA 13  
FOCUS BA 13  
FOCUS BA 13  
—  
FOCUS BA 13  
FOCUS BA 13  
FOCUS BA 13

**WF 75/155**

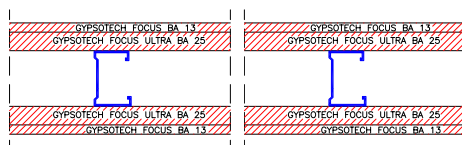
minimo  
C 75



FOCUS BA 20  
FOCUS BA 20  
—  
ISOLANTE (opzionale)  
—  
FOCUS BA 20  
FOCUS BA 20

**WF 75/150 ULTRA**

minimo  
C 75

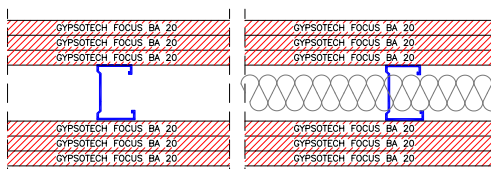


FOCUS BA 13  
FOCUS ULTRA BA 25  
—  
FOCUS ULTRA BA 25  
FOCUS BA 13

## EI 180

**WF 75/195**

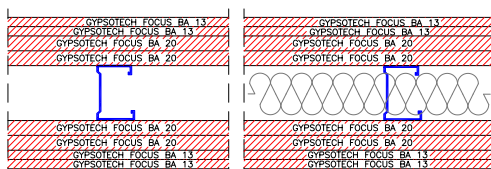
minimo  
C 75



FOCUS BA 20  
FOCUS BA 20  
FOCUS BA 20  
—  
ISOLANTE (opzionale)  
—  
FOCUS BA 20  
FOCUS BA 20  
FOCUS BA 20

**WF 75/205**

minimo  
C 75



FOCUS BA 13  
FOCUS BA 13  
FOCUS BA 20  
FOCUS BA 20  
—  
ISOLANTE (opzionale)  
—  
FOCUS BA 20  
FOCUS BA 20  
FOCUS BA 13  
FOCUS BA 13

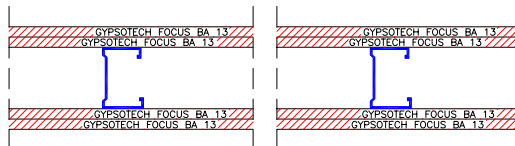
# H max 12 m

Le configurazioni riportate si riferiscono esclusivamente al caso d'incendio, e non sostituiscono le valutazioni strutturali in caso di esercizio normale che andranno eseguite secondo le disposizioni normative cogenti.

## EI 45

**WF 75/125**

minimo  
C 75

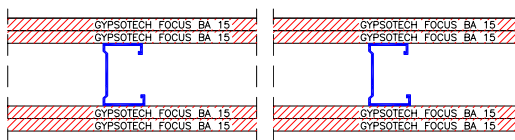


FOCUS BA 13  
FOCUS BA 13  
—  
—  
FOCUS BA 13  
FOCUS BA 13

## EI 60

**WF 75/135**

minimo  
C 75

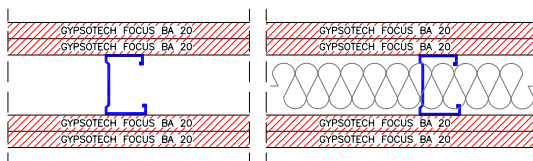


FOCUS BA 15  
FOCUS BA 15  
—  
—  
FOCUS BA 15  
FOCUS BA 15

## EI 90

**WF 75/155**

minimo  
C 75

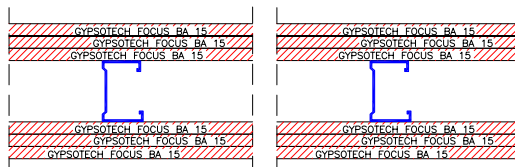


FOCUS BA 20  
FOCUS BA 20  
—  
ISOLANTE (opzionale)  
—  
FOCUS BA 20  
FOCUS BA 20

## EI 120

**WF 75/165**

minimo  
C 75



FOCUS BA 15  
FOCUS BA 15  
FOCUS BA 15  
—  
—  
FOCUS BA 15  
FOCUS BA 15  
FOCUS BA 15



**FASSA S.r.l.**

Via Lazzaris, 3  
31027 Spresiano (TV)  
T +39 0422 7222  
F +39 0422 887509

**Stabilimento produttivo**

Via Asti, 139  
14031 Calliano (AT)  
T +39 0141 915145  
F +39 0422 723055

**Richieste tecniche**

Per qualsiasi richiesta tecnica o chiarimento rivolgersi a:  
[area.technica@fassabortolo.com](mailto:area.technica@fassabortolo.com)  
[www.fassabortolo.com](http://www.fassabortolo.com)  
[www.gypsotech.it](http://www.gypsotech.it)

